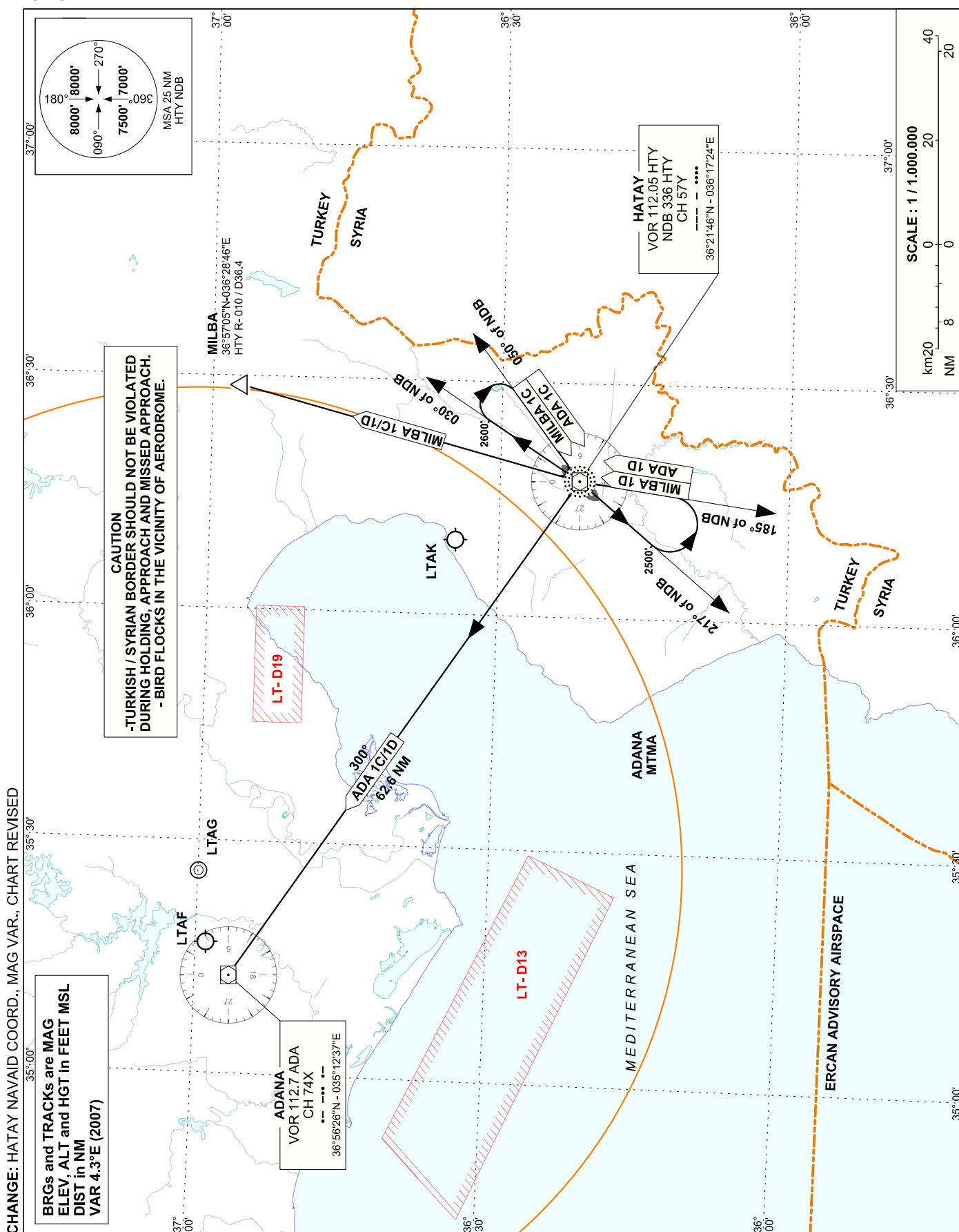


TRANSITION ALTITUDE
10 000 FT

APP : 128.525
TWR : 121.700

HATAY

HATAY AERODROME STANDARD INSTRUMENT DEPARTURE ROUTES

(BASED ON HATAY NDB)

For RWY 04

After take off climb to 2600 FT on HTY NDB BRG 030°, then turn right proceed to HTY NDB on 230° cross 5000 FT or above,

**I ADA 1C
 (ADA ONE CHARLIE)**

:Turn right to intercept HTY NDB BRG 300°, join AWY.

**MILBA 1C
(MILBA ONE CHARLIE)**

:Turn right to intercept HTY NDB BRG 010°, join AWY .

For RWY 22

After take off climb to 2500 FT on HTY NDB BRG 217°, then turn left proceed to HTY NDB on 005° cross 5000 FT or above,

**I ADA 1D
 (ADA ONE DELTA)**

:Turn left to intercept HTY NDB HDG 300, join AWY.

**MILBA 1D
(MILBA ONE DELTA)**

:Turn right to intercept HTY NDB HDG 010, join AWY .

NOTE: Max departure IAS 204 KT until inbound to HTY NDB.