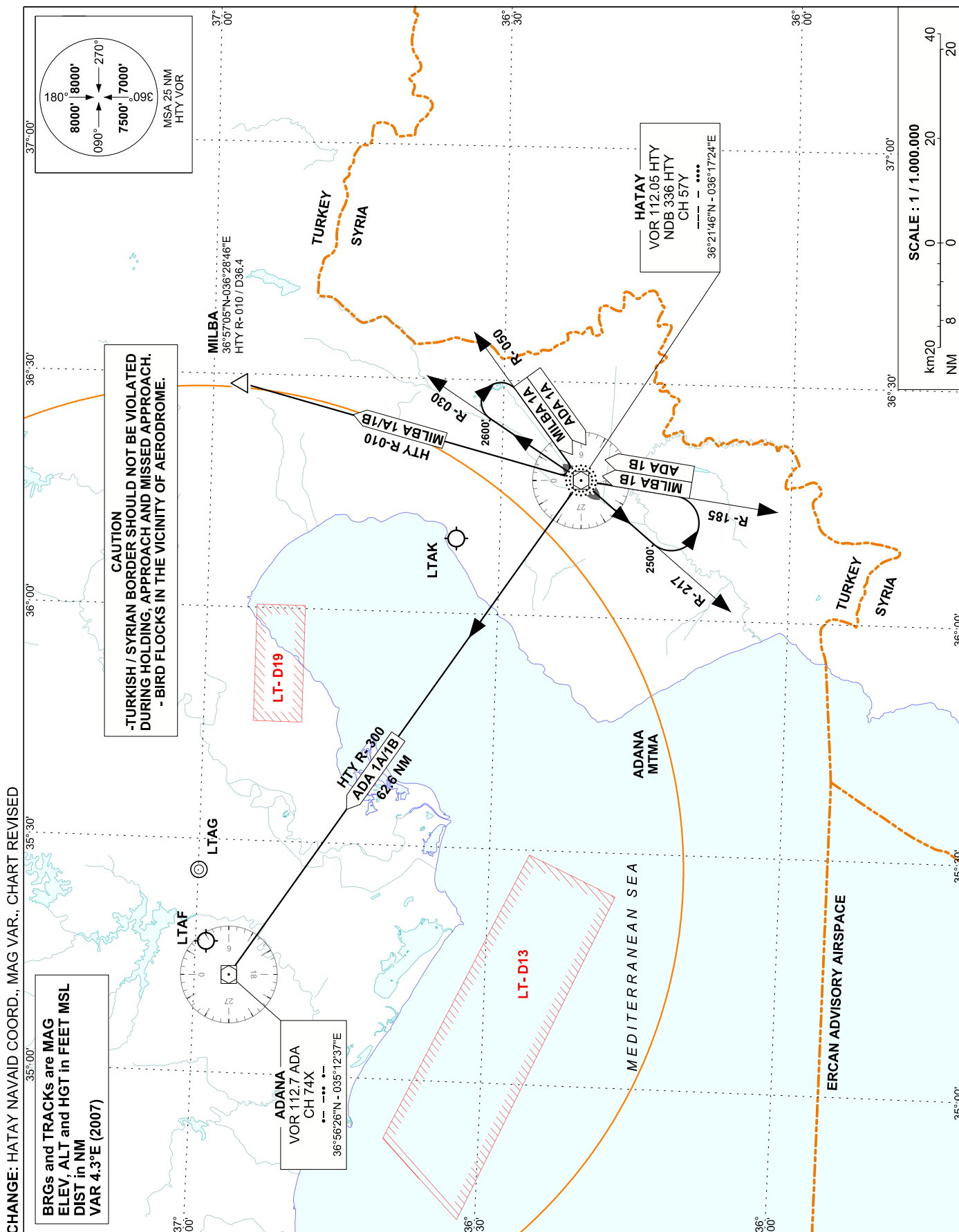


STANDARD DEPARTURE
CHART INSTRUMENT (SID)
ICAO

TRANSITION ALTITUDE
10 000 FT

APP : 128.525
TWR : 121.700

HATAY



HATAY AERODROME STANDARD INSTRUMENT DEPARTURE ROUTES

(BASED ON HATAY VOR)

For RWY 04

After take off climb to 2600 FT on HTY VOR R-030, then turn right proceed to HTY VOR on 230° (on R-050) cross 5000 FT or above,

I ADA 1A
(ADA ONE ALPHA) : Turn right to intercept R-300, join AWY.

I MILBA 1A
(MILBA ONE ALPHA) : Turn right to intercept R-010, join AWY.

For RWY 22

After take off climb to 2500 FT on HTY VOR R-217, then turn left proceed to HTY VOR on 005° (on R-185) cross 5000 FT or above,

I ADA 1B
(ADA ONE BRAVO) : Turn left to intercept R-300, join AWY.

I MILBA 1B
(MILBA ONE BRAVO) : Turn right to intercept R-010, join AWY .

NOTE: Max departure IAS 204 KT until inbound to HTY VOR.