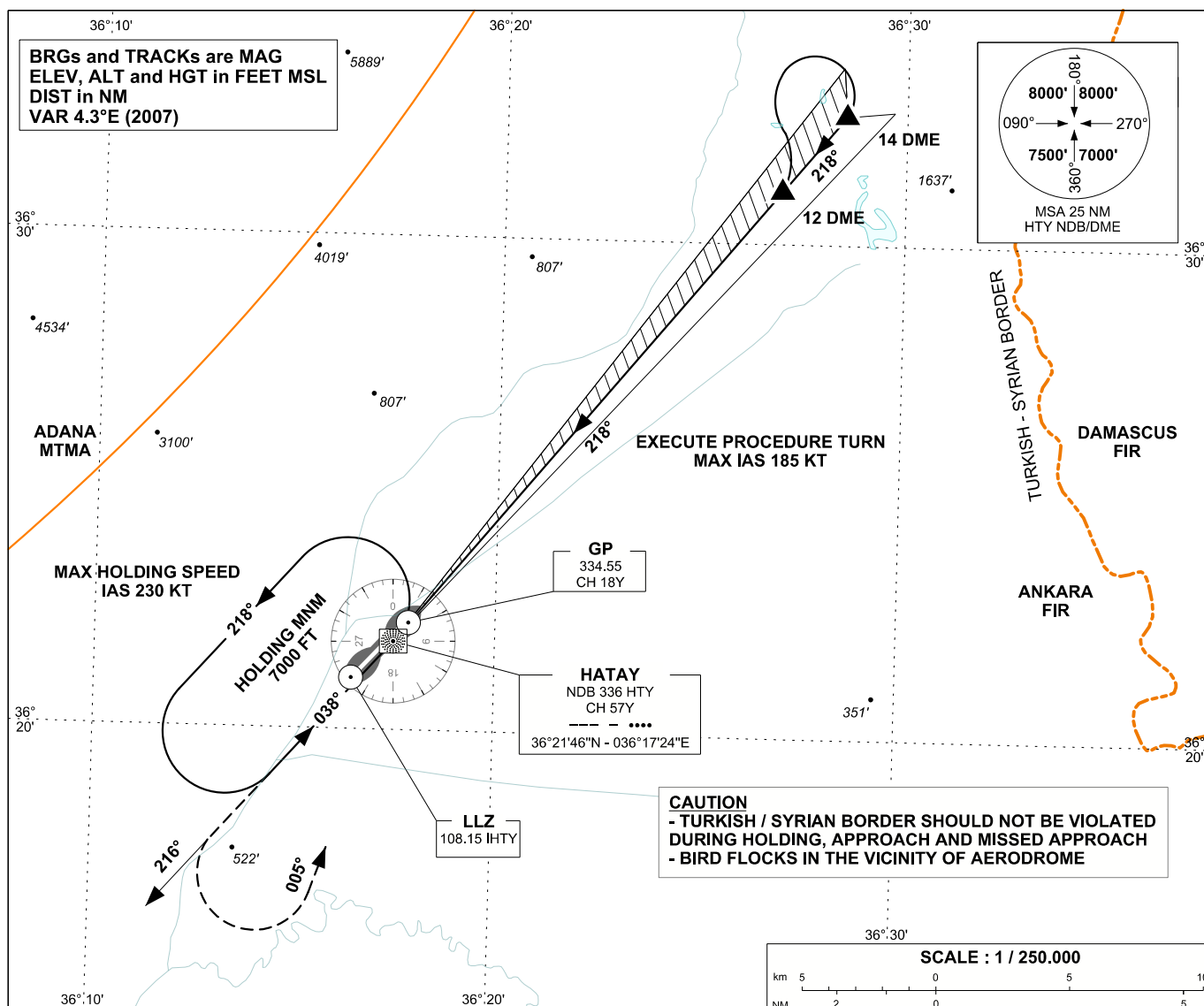


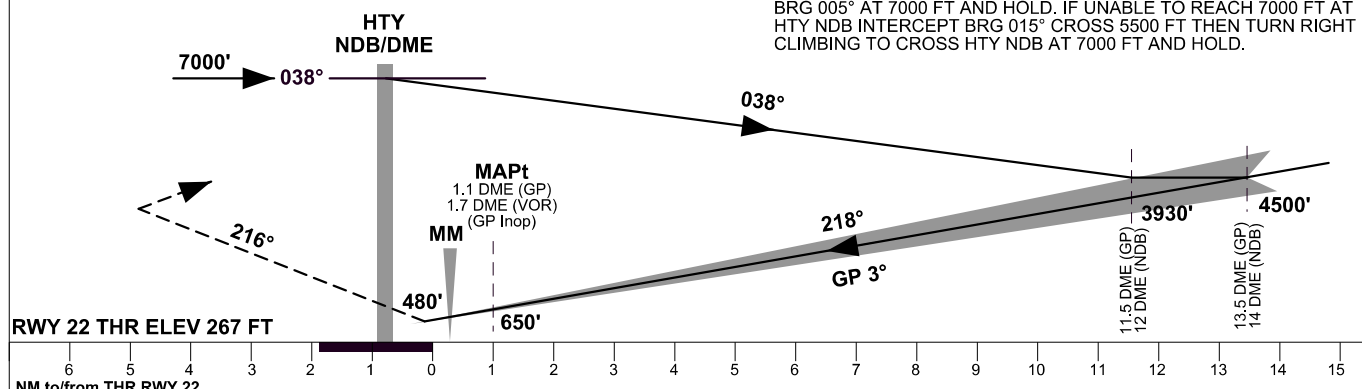
**HATAY**  
**ILS/NDB/DME** RWY 22

APP	128.525	AD ELEV	267 FT
TWR	121.700	TRANSITION ALTITUDE	10000 FT
ATIS			

**INSTRUMENT  
APPROACH  
CHART - ICAO**



**MISSED APPROACH**  
MAX IAS 185 KT UNTIL INBOUND TO HTY NDB, CLIMB ON BRG 216°  
CROSS 2300 FT THEN TURN LEFT PROCEED TO HTY NDB ON  
BRG 005° AT 7000 FT AND HOLD. IF UNABLE TO REACH 7000 FT AT  
HTY NDB INTERCEPT BRG 015° CROSS 5500 FT THEN TURN RIGHT  
CLIMBING TO CROSS HTY NDB AT 7000 FT AND HOLD.



OCA (H)	A	B	C	D	
Straight-in Approach		467' (200')			- INTERCEPT GP AT 11.5 DME (GP) 12 DME (NDB)
GP Inoperative		650' (383')			- ILS RDH 54 FT
Circling	770' (503')		2200' (1933')	2860' (2593')	