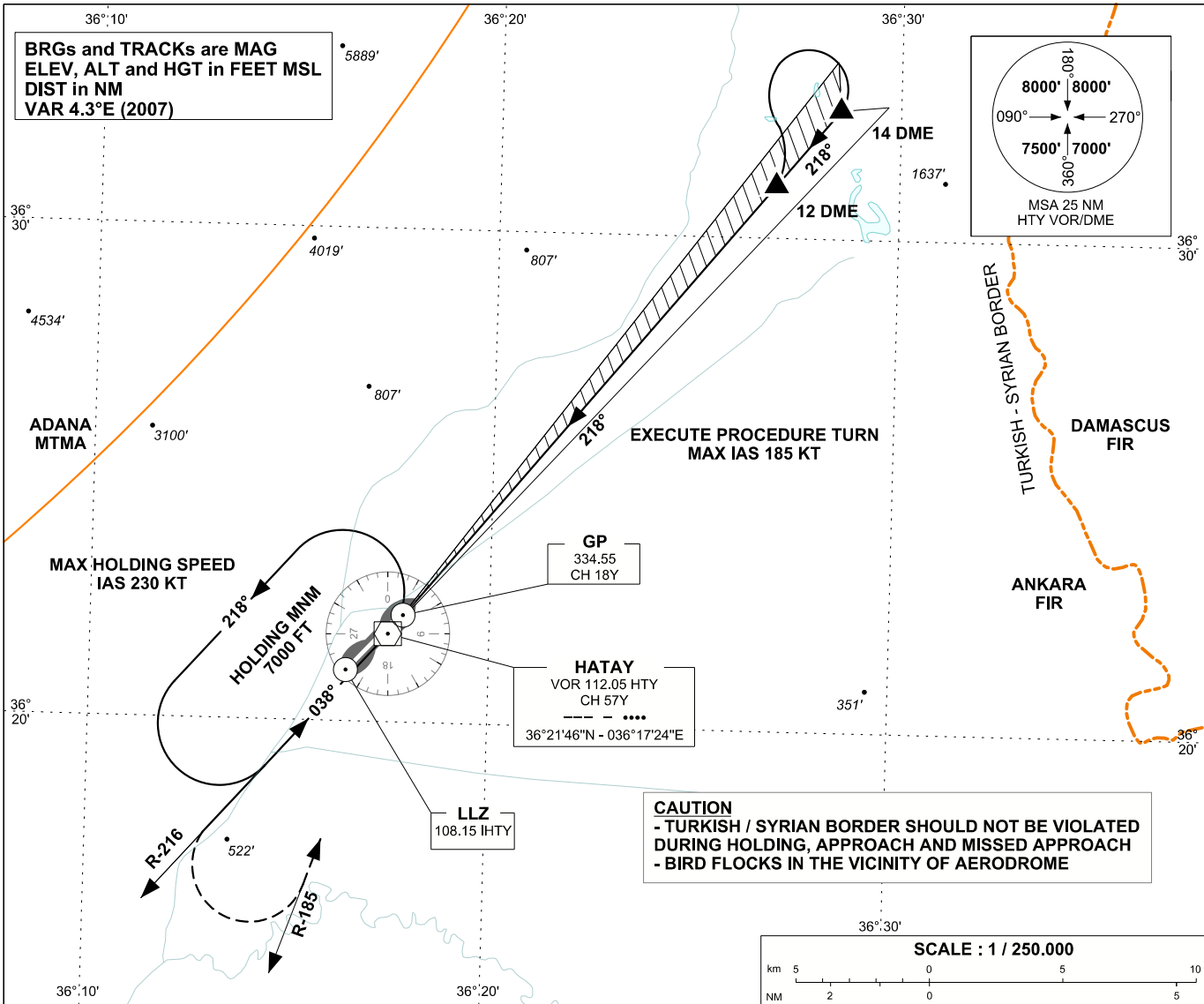


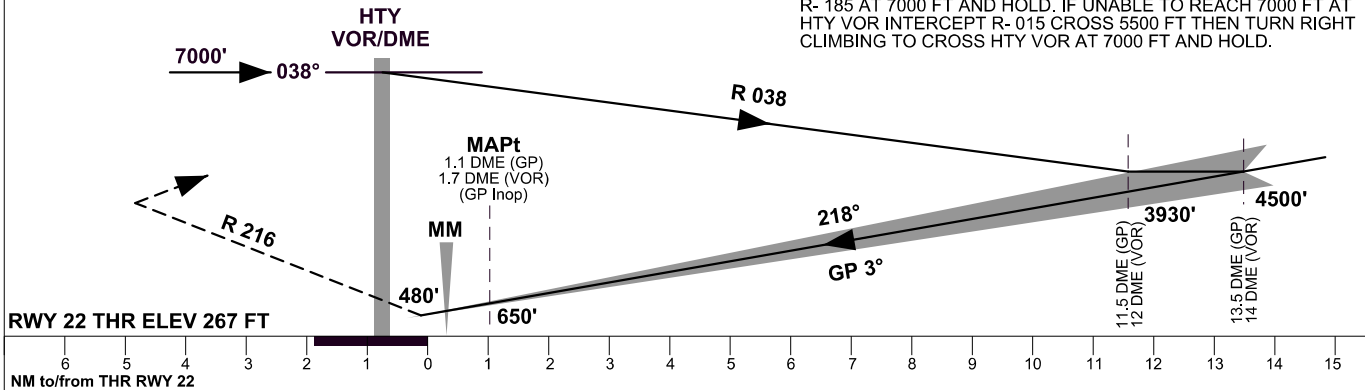
INSTRUMENT
APPROACH
CHART - ICAO

APP	128.525	AD ELEV	267 FT
TWR	121.700	TRANSITION ALTITUDE	10000 FT
ATIS			

HATAY
ILS/VOR/DME RWY 22



MISSED APPROACH
MAX IAS 185 KT UNTIL INBOUND TO HTY VOR, CLIMB ON R-216
CROSS 2300 FT THEN TURN LEFT PROCEED TO HTY VOR ON
R-185 AT 7000 FT AND HOLD. IF UNABLE TO REACH 7000 FT AT
HTY VOR INTERCEPT R-015 CROSS 5500 FT THEN TURN RIGHT
CLIMBING TO CROSS HTY VOR AT 7000 FT AND HOLD.



OCA (H)	A	B	C	D	<div>- INTERCEPT GP AT 11.5 DME (GP) 12 DME (VOR)</div> <div>- ILS RDH 54 FT</div>
Straight-in Approach	467' (200')				
GP Inoperative	650' (383')				
Circling	770' (503')		2200' (1933')	2860' (2593')	