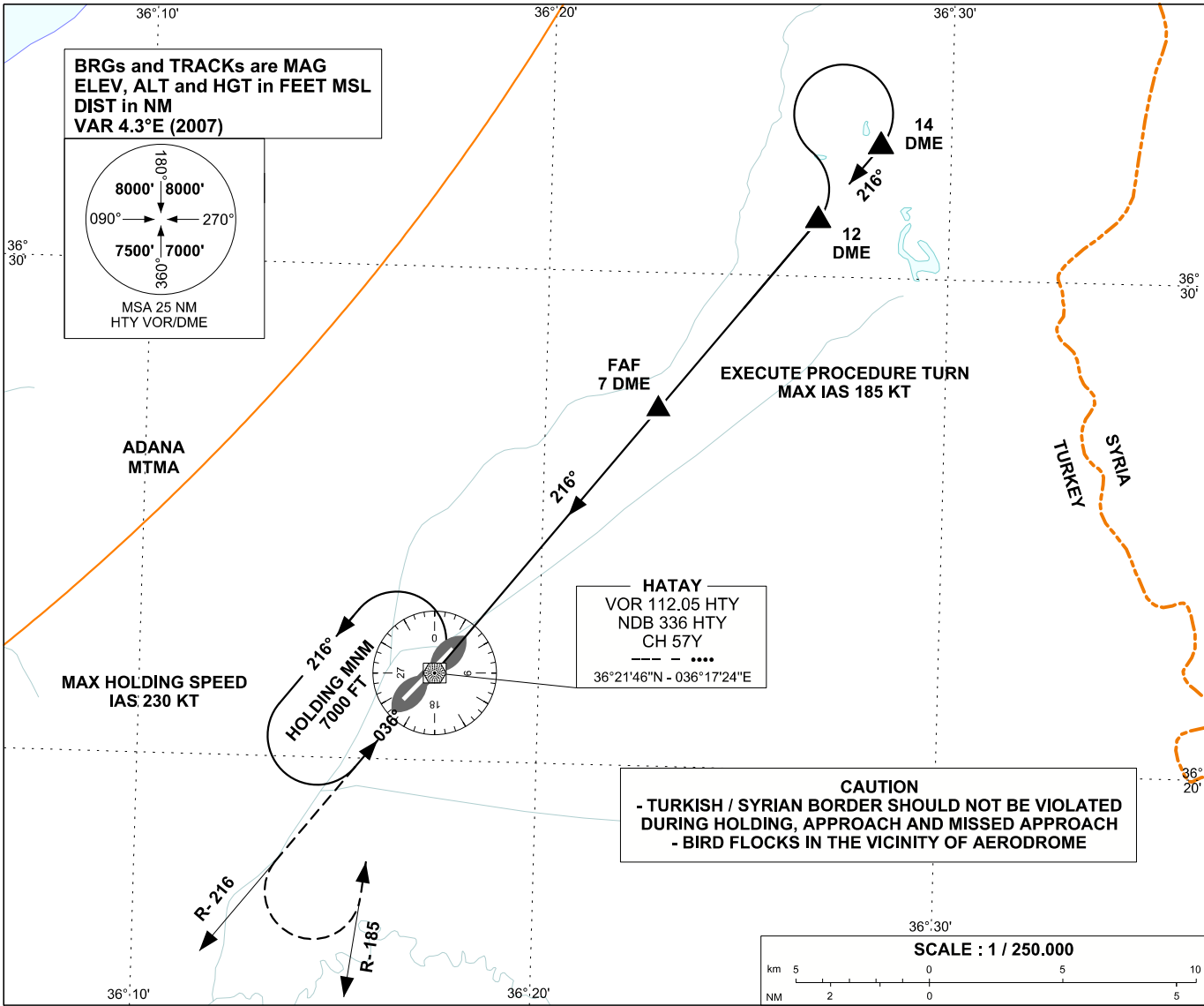


INSTRUMENT
APPROACH
CHART - ICAO

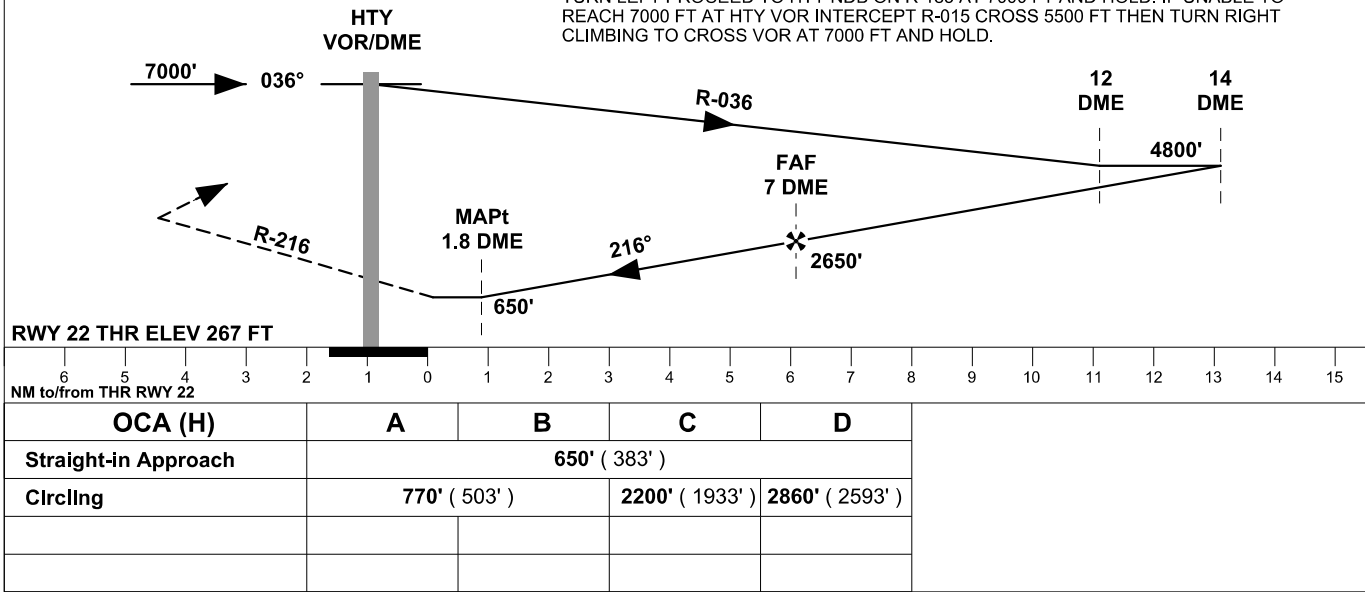
APP	128.525	AD ELEV	267 FT
TWR	121.700	TRANSITION ALTITUDE	10 000 FT
ATIS	-		

HATAY

VOR/DME RWY 22



MISSED APPROACH
MAX IAS 185 KT UNTIL INBOUND TO HTY VOR. CLIMB ON R-216 CROSS 2300 FT THEN
TURN LEFT PROCEED TO HTY NDB ON R-185 AT 7000 FT AND HOLD. IF UNABLE TO
REACH 7000 FT AT HTY VOR INTERCEPT R-015 CROSS 5500 FT THEN TURN RIGHT
CLIMBING TO CROSS VOR AT 7000 FT AND HOLD.



CHANGE: HATAY NAVAID COORD., MAG VAR., CHART REVISED